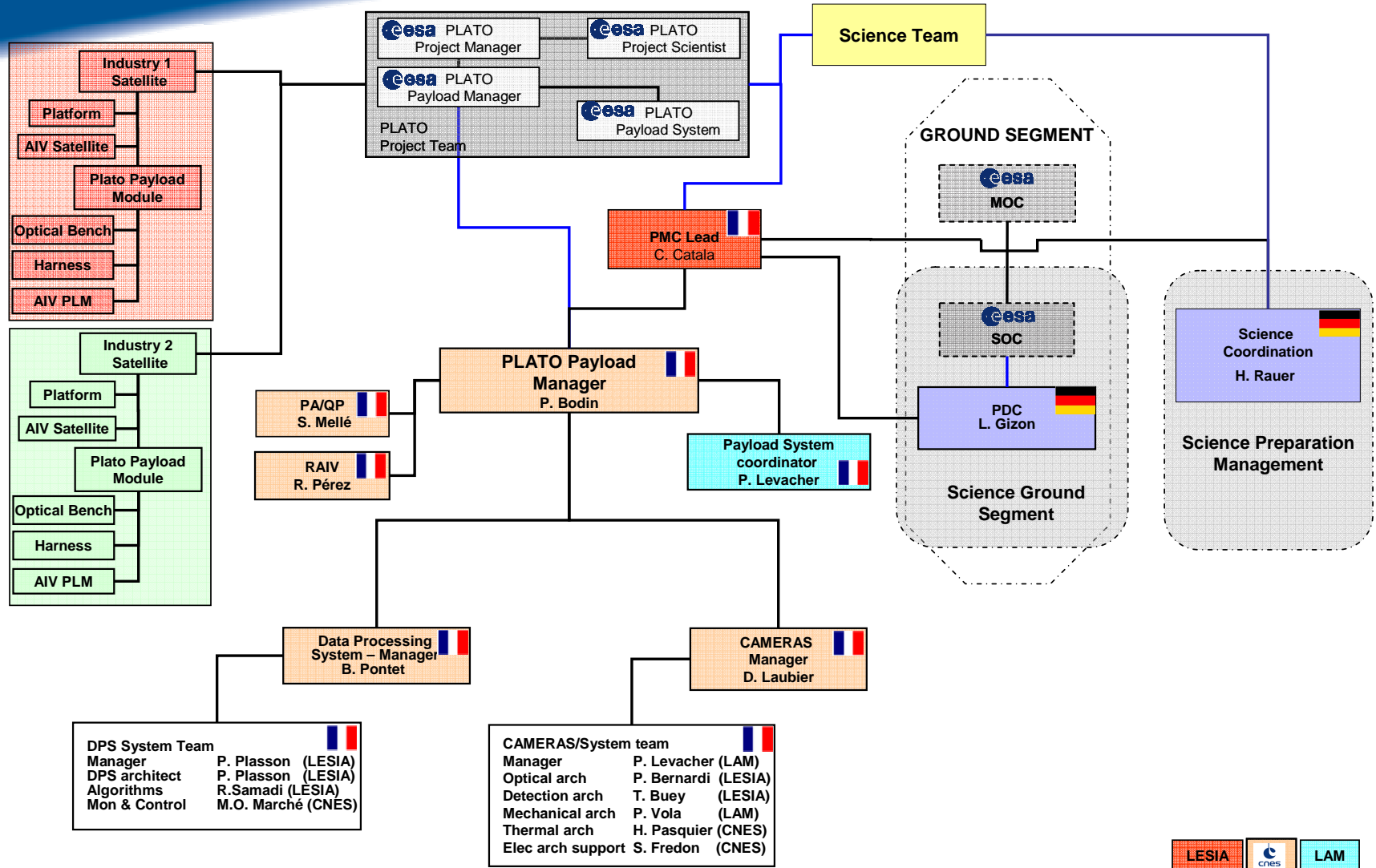
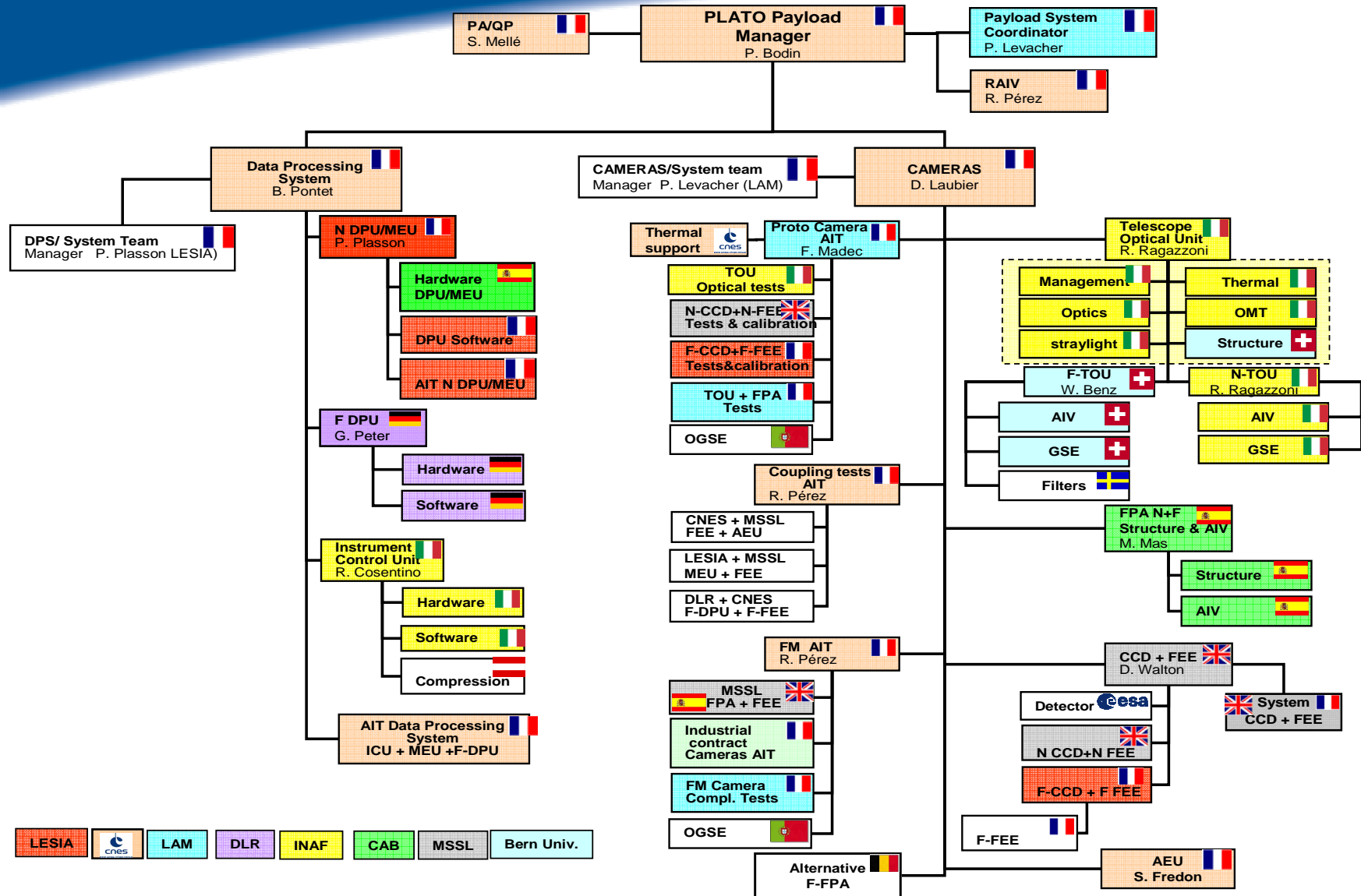




CENTRE NATIONAL D'ÉTUDES SPATIALES

# PAYLOAD TEAM ORGANIZATION & DEVELOPMENT PLAN





The development Plan, defined in the AO answer, takes into account :

■ **the schedule constraints defined by ESA**

◆ **Delivery packages proposed to ESA with associated dates:**

- |  |              |
|--|--------------|
| • First delivery: 8 N-Cameras (with 1 N-AEU, 1 MEU & 1 MEU-PSU, 1 ICU) | May 2015     |
| • Second delivery: 2 F-Cameras (with 1 F-AEU, 2 F-DPU)                 | July 2015    |
| • Third delivery: 8 N-Cameras (with 1 N-AEU, 1 MEU)                    | October 2015 |
| • Fourth delivery: 8 N-Cameras (with 1 N-AEU, 1 MEU)                   | January 2016 |
| • Fifth delivery: 8 N-Cameras (with 1 N-AEU, 1 MEU, 1 ICU)             | March 2016   |

■ **the outcome of discussions that took place during various meetings with each of our Partners before summer.**

■ **the assumptions defined in the next slide:**

- ◆ **For the optical part**
- ◆ **For the electronic equipments**

**This Development Plan can be updated and optimized during the definition phase, while respecting the defined guidelines to establish it.**

**For the optical part and FPA:**

■ **During the definition phase:**

- ◆ **Confirm there is no technological development needs (coating...)**
- ◆ **Validate all critical technical points of the Instrument design to ensure a  $TRL \geq 5$ .**
- ◆ **Validate alignment performances and optical setting in representative environment through Prototype tests.**
- ◆ **The test results at Camera Prototype level authorize:**
  - the manufacture of the EM FPA
  - the manufacture of the QM TOU (except for long lead lenses which are anticipated)

■ **The test results of the EM performances and interfaces validation authorize the qualification tests of QM FPA**

■ **The test results at QM camera level authorize the manufacture of the FM TOU and FPA (except for long lead lenses)**

## For the electronic part:

### ◆ During the definition phase:

- Validate all critical technical points of the Instrument design to ensure a TRL  $\geq 5$  at the end of the Definition Phase.
  - The test results of all main interfaces between equipments authorize the manufacture of the EM equipments (CCD-FEE IF, DPU-FEE IF...),
- ◆ **The aim of the EM equipments is to validate the design, the performances. If needed to reach performances, some updates of the equipments are authorized,**
- ◆ **The test results of the EM performances and of all interfaces between equipments authorize the qualification tests of QM equipments,**
- ◆ **The qualification test results authorize the FM manufacture.**

